

DUTCH LANKA TRAILERS[®]

**P
O
R
T

T
R
A
I
L
E
R
S**



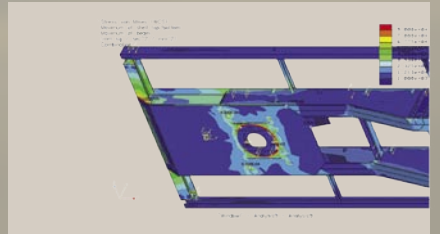
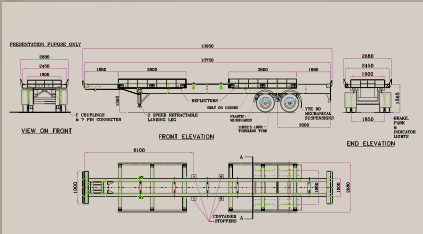
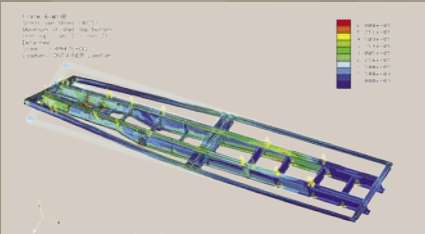
DUTCH LANKA TRAILERS®



Product Range



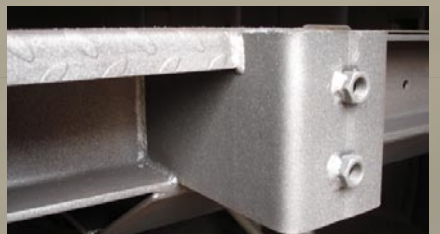
Design & Engineering



Manufacturing Process



Quality Assurance



The Company

Dutch Lanka Trailer Manufacturers was established in 1992 with Dutch technical collaboration to manufacture trailers for the regional markets of South Asia, Africa and the Middle East. Since its inception, the company has designed and manufactured a variety of trailers under Dutch technical supervision for both the export and domestic markets. In a relatively short period of time, the company has emerged as a leading manufacturer of trailers in this region.

Our factory, located in Sri Lanka, is equipped with the latest fabrication equipment necessary to manufacture trailers to international standards and specifications. Our stringent in-house quality assurance system ensures that our products meet all stipulated quality and safety standards.

We employ an in-house team of design engineers who are constantly innovating new products for various transport applications using Computer Aided Design software. Our in-house design capabilities enable us to customize trailers for any transport application.

Products

During the last 14 years we have designed and developed almost the entire range of port related trailers, such as Skeletal Chassis, Bomb Cart Trailers, RORO Trailers, Bunded Trailers and Fuel Tanker Re-Fuellers, etc. Our in-house design team has developed many customized products conforming to individual client requirements as well.

Engineering

Our team of design engineers are constantly developing new products and also making improvements to existing products to cater to customer requirements. All designing is undertaken using the latest CAD software with 3-D modeling. Thereafter the 3-D models are analyzed using Finite Element Analysis (FEM) for stress and deflection, to ensure products meet all design criteria.

Manufacturing

Manufacturing facilities are located in Sri Lanka and India. In both plants modern manufacturing methods are used with the latest fabrication equipment to ensure a high quality product at a minimum cost to the customer.

Quality

DLT has a stringent in-house quality assurance program to ensure that products meet clients' expectations and our own high quality standards. We are an ISO 9001 accredited company.



Bomb Cart Trailers (Corner - Less)



Pneumatic/Solid Rubber Tyres



Heavy Duty Suspension



Rocker Beam Suspension



Braked or Unbraked

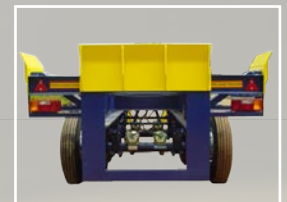
Bomb Cart Trailers

Our first Bomb-Cart Trailer was developed in 1995. Since then many units have been supplied to port operators around the world in a variety of capacities and configurations.

The robust design will ensure your trailer withstands the rigorous port conditions anywhere in the world.

We offer a range of models from 40 tons up to 65 tons capacity.

All the models can be offered with options such as solid tyres, bolt-on guides, rocker beam suspension, braked or unbraked axles.



With Electrical Fittings



Welded or Bolt on Guides



Guides for use with Fork Lifts



Container Stopper



RORO



Solid Rubber Tyres



Container Guides

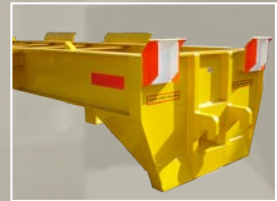
RORO

RORO trailers are customized both for container handling and for general cargo.

Double oscillating bogie with solid rubber tyres will provide many hours of trouble free service.

Gooseneck pockets can be customized to suit any customer requirement of varying goosenecks.

Our models range from 40 tons up to 100 tons.



Skeletal Type



Flat Bed Type



Skeletal (With Corner Guides)



Skeletal (with Corner Guides)

Our Skeletal Chassis with heavy-duty guides are a practical solution to handling containers within the port. The simple but robust design is ideally suited for harsh operating conditions.

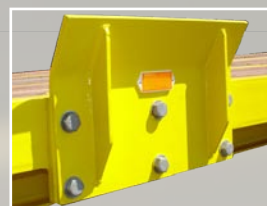
Drawbar

The Drawbar trailer too can be used for both port and road applications. A heavy duty ball-race turntable is fitted to the front axle, fully fitted units with brakes and lights are available for road applications.

Skeletal

Standard skeletal trailers can be used for both port and road applications. Designed for 2 x 20', 1 x 40' or 1 x 45' ISO containers. Pay load capacity range from 40 tons to 65 tons.

Draw Bar



Bolt on Side Guide



Bolt on Corner Guide



Heavy Duty Ball-Race Turn Table

Skeletal



Heavy Duty Draw Bar with Towing Eye

Bunded



Bunded

Our robust high liquid capacity Bunded Trailer is equipped with heavy duty side guides to ensure containers can be easily positioned. Provided with twist locks to lock leaking containers to the trailer for stability, discharge is provided from all four corners of the trailers.

Fuel Tanker (Re-Fueller)



Fuel Tanker (Re-Fueller)

The 18,000 litre capacity Tanker Re-Fueller is fitted with a Dual discharge unit of 50 liters/min and 500 liters/min.

OUR PRODUCTS
ARE IN SERVICE
IN OVER
20 COUNTRIES



- ALGERIA ●
- BAHRAIN ●
- BANGLADESH ●
- EGYPT ●
- ETHIOPIA ●
- INDIA ●
- IRAN ●
- JORDAN ●
- KUWAIT ●
- MALDIVES ●
- MALTA ●
- NIGERIA ●
- OMAN ●
- PAKISTAN ●
- PHILIPPINES ●
- QATAR ●
- SAUDI ARABIA ●
- SEYCHELLES ●
- SRI LANKA ●
- SYRIA ●
- TANZANIA ●
- UAE ●
- ZAMBIA ●

● Agent Appointed

 **Dutch Lanka Trailer
Manufacturers Ltd**

3rd Floor, 35A, N M Perera Mawatha, Colombo 08, Sri Lanka. OR

Nattandiya Road, Dankotuwa, Sri Lanka.

Tel : +94-11-2886821, +94-11-2054844

Fax : +94-11-2054844

E-mail : sales@dlt.lk, prasanna@dlt.lk

Web : www.dutchlankatrailers.lk